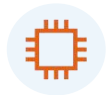


FD802XW-X-R411

1GE+1FE+1POTS+CATV+WIFI XPON ONU



High Speed CPU



Low Power Consumption



Software Customization



Optional Shell Supply



Brief Views

FD802XW-X-R411 is an indoor fiber broadband access terminal. The device provides one GPON / EPON adaptive optical port and supports XPON mode. It can be used in connection with our company FD16 series GPON OLT or FD11 / 12 series EPON OLT. It can also interconnect with the mainstream manufacture (Huawei / ZTE / Fiberhome) GPON or EPON OLT to provide users with Internet, VOIP and CATV services based on GPON and EPON technology. The device performance and functions also meet IEEE802.3ah and ITU-T G984.X technical specifications.

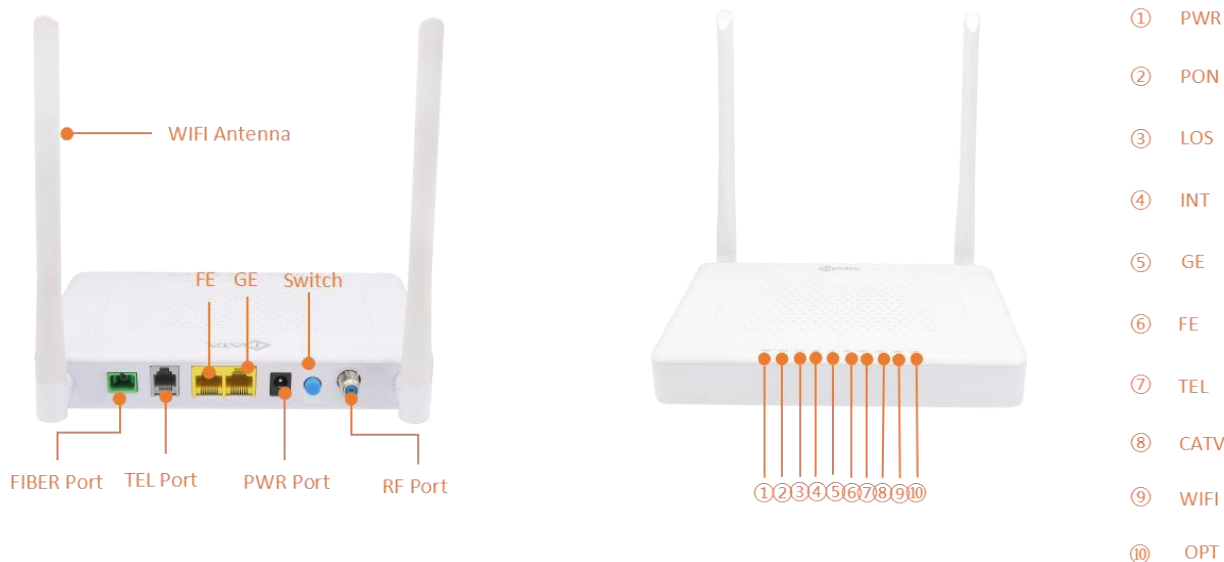
FD802XW-X-R411 integrates wireless function which meets 802.11 b/g/n technical standards. It has two external high gain omnidirectional antennas and wireless transmission rate up to 300Mbps. It has the characteristics of strong penetrating power and wide coverage. It can provide users with more efficient data transmission security.



Functional Feature

- Single-fiber access, provides internet, VOIP,CATV, WIFI multiple service
- Support ONU auto-discovery/Link detection/remote upgrade of software
- Support VLAN transparent, tag configuration
- Support multicast function
- Support DHCP/Static/PPPOE internet mode
- Support port-binding
- Support data encryption and decryption function
- Support Dynamic Bandwidth Allocation (DBA)
- Support MAC filter and URL access control
- Support data encryption and decryption function
- Support Dynamic Bandwidth Allocation (DBA)
- Support MAC filter and URL access control
- Support remote CATV port management
- Support power-off alarm function ,easy for link problem detection
- Specialized design for system breakdown prevention to maintain stable system
- EMS network management based on SNMP ,convenient for maintenance

Product Interface and LED



LED Definitions

Indicator		Description
PWR	Power status	On: The ONT is power on; Off: The ONT is Power off;
PON	ONT Register	On: Success to register to OLT; Blinking: In process of registering to OLT; Off:Failed to register to OLT or no normal optical signal input;
LOS	PON optical signals	On: Optical power lower than receiver sensitivity; Off: Optical in normal;
INT	Internet status indicator	On: The routed WAN Internet access service is normal. Off: The routed WAN Internet access service is abnormal.
GE	LAN port status	On: Ethernet connection is normal; Blinking: Data is being transmitted through the Ethernet port; Off: Ethernet connection is not set up;
FE	LAN port status	On: Ethernet connection is normal; Blinking: Data is being transmitted through the Ethernet port; Off: Ethernet connection is not set up;
WIFI	WIFI	Blinking:Data is being transmitted On:WIFI function Opens
CATV	CATV status	On:CATV optical normal Off: CATV signals are not received
TEL	Telephone port status	On:The connection between the TEL port and the voice server has been set up Blinking:he voice service of the TEL port is established; Off:The connection between the TEL port and the voice server is not set up.
OPT	Light intensity indicator	On: higher than ONURX maximum threshold; Flashing: lower than ONU RX minimum threshold; Off: ONU RX is within the normal threshold range.

Hardware

● GPON/EPON Port

- Single mode single fiber
- GPON: FSAN G.984.2 standard,Class B+
- EPON: 1000BASE-PX20+ symmetric
- GPON: 2.488Gbps/1.244Gbps downstream/upstream
- EPON: 1.25Gbps downstream/upstream
- Wavelength :
Transmit: 1310nm Receiver: 1490nm
- Receiving sensitivity :
GPON: -28dBm EPON: -27dBm
- Saturated power :
GPON: -8dBm EPON: -3dBm
- Transmitting power :
GPON: 0.5~5dBm EPON:0~4dBm

● User Port(LAN)

- 1*10/100 M and 1*10/100/1000 M Auto-negotiation
- Full Duplex / Half-Duplex
- RJ45, Auto-MDI/MDI-X
- Transmission Distance 100 Meter

● User Port(POTS)

- RJ-11 connector
- 1*accounts
- SIP and H.248 protocol
- TDMF
- G711U/G711A/G729/G722 encoding and decoding

● WIFI performance parameters

- IEEE802.11b/g/n(2.4G)
- Max rate: 300M(2.4G)
- MAX TX power 2.4G:17dBm

- **CATV (Input /Output port)**

- Wavelength: 1550nm
- Input optical power: -15dBm~+2dBm(without AGC)
- RF frequency: 47MHz~1000MHz
- RF output level: $\geq 65\text{dBuV}$ (@-12dBm@85MHz) (without AGC)
- RF output return loss: >10dB(without AGC)
- RF impedance: $75\ \Omega$

- **Power**

- External 12VDC/1A power supply adapter Power
- Power consumption: <9W

- **Indicators**

- PWR / PON / LOS / GE / FE / TEL / CATV / WIFI / INT / OPT

- **Dimension and Weight**

- Item Dimension: 195mm(L) x 130mm(W) x 25mm (H)
- Item weight: about 300g

- **Environmental Specifications**

- Operating temperature: 0 to 40° C
- Operating humidity: 10% to 90%(Non-condensing)

Software

- **Management**

- EPON :OAM / WEB / TR069 / Telnet
- GPON:OMCI / WEB / TR069 / Telnet

- **L3**

- IPv4/IPv6 Dual Stack
- NAT
- DHCP client/server
- PPPOE client/ Pass through
- Static and dynamic routing

- **Switch**

- MAC address learning
- MAC address learning account limit
- Port flow control
- Broadcast storm suppression
- VLAN transparent/tag/translate/trunk

- **Security**

- Firewall
- MAC address/URL filter
- Remote WEB/Telnet access control

- **Wireless**

- SSID broadcast/ hide
- Choose channel automatically

- **Register**

- Auto-discovery/Link detection/Remote upgrade software
- Auto/MAC/SN/LOID+Password authentication

Application

- Typical Solution: FTTH,
- Typical Business: Internet, VOIP, CATV, WI-FI

