

FD1816S-B1

16 PON PORT XG(S)-PON&GPON OLT



Dedicated Chip



1:256



CMS Management



Layer3 Switching



Software Customization

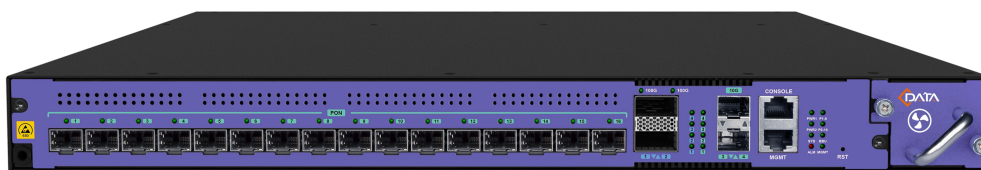


Redundant Power Supply

Brief Views

XG(S)-PON&GPON OLT FD1816S-B1 completely meets relative standard of ITU-T G.9807.1. It is 1U rack-mounted device with 2* 1G(SFP) / 10G(SFP+) uplink ports, 2* 40G(QSFP+) / 100G(QSFP28) uplink ports and 16 XG(S)-PON&GPON(Combo PON) ports. The XG(S)-PON&GPON port supports the splitting ratio of 1:256. The XG(S)-PON&GPON system supports up to 4096 terminal connections.

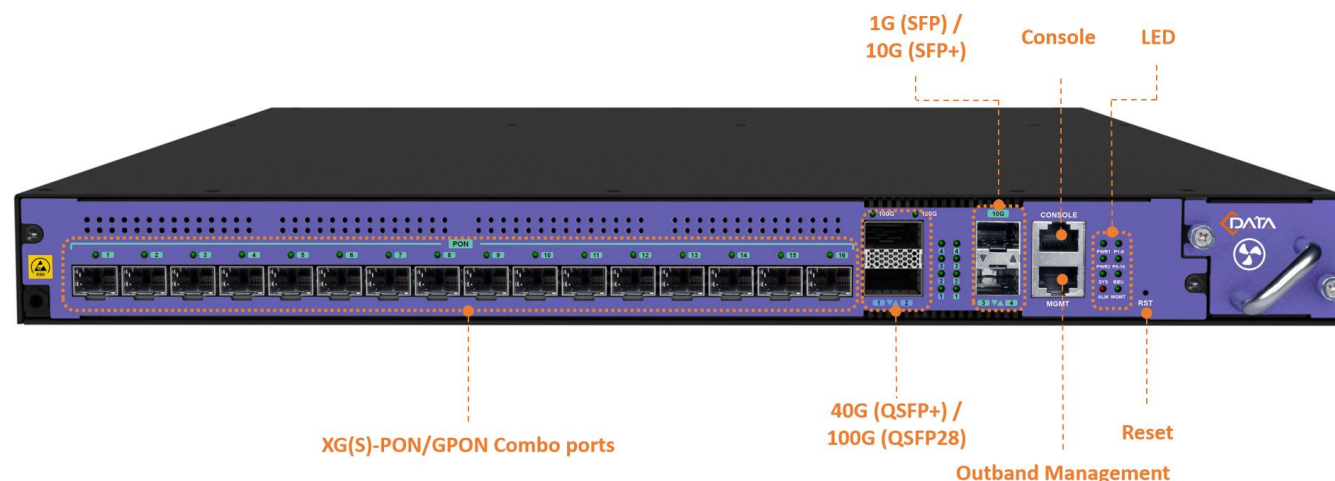
This product has excellent performance, is easy to use and flexible, and is easy to deploy. It is suitable for application scenarios with multiple network businesses and high user density. Moreover, the product meets the requirements of promoting network performance, improving reliability and reducing power consumption in the perspective of access network and enterprise network and is applicable to three-in-one broadcast television network, FTTP (Fiber to the premise), video monitoring network, enterprise LAN (Local Area Network), internet of things and other network applications with a very high price/performance ratio.



Functional Feature

- Meet ITU-T G.9807.1/G.984/G.988 standard and standards of Chinese Communication Industry
- Support OMCI Protocol
- 1U height 16 PON XG(S)-PON&GPON OLT product in compact design of Pizza-Box
- Fan speed adjust automatically
- 1+1 Pluggable power module
- BBU optional
- Layer 2 Switching Function
- OLT equips with very powerful layer 2 Full Wire Speed Switching and completely supports layer 2 protocol. The OLT supports varieties of layer 2 functions like TRUNK, VLAN, LACP, rate limit, port isolate, queue technology, flow control technology, ACL and so on, which provides technical guarantee for the development of multi-service integrated.
- Complete PON protection switching function
- QoS Guarantee
- XG(S)-PON&GPON Products maintains fully-improved DBA with excellent QoS service capabilities. DBA meets different QoS requirements from different service flow in latency, jitter, packet loss rate.
- Easy-to-Use Management System
- Support management method of CLI, WEB, SNMP, TELNET, SSH and meet OMCI standard, through OMCI channel protocol service management can be realized, including ONT function parameter set, T-CONT service lines and amount, QoS parameters, configuration information request, performance statistics, auto-reporting of running events in system, configuration for ONT from OLT, fault diagnosis and management of performance and safety.

Product Interface



Product Specification

Mechanics

Dimensions	441mm(L)*397.5mm(W)*44.4mm(H)
Weight	6.18Kg

Hardware

Uplink Port	Uplink port	2* 1G(SFP) / 10G(SFP+) ports 2* 40G(QSFP+) / 100G(QSFP28) ports
PON Port	Quantity	16
	Physical Interface	SFP+ slot
	Max Splitting Ratio	1:256
Management Port		1* CONSOLE local management port 1* 100/1000BASE-Tx out-band MGMT Ethernet port
PON Port Attribute	Transmission Distance	20KM
	Port Rate	XGS-PON: Downstream: 10Gbps Upstream: 10Gbps XG-PON: Downstream: 10Gbps Upstream: 2.5Gbps GPON: Downstream: 2.5Gbps Upstream: 1.25Gbps
	Wavelength	XGS-PON: Forwarding: 1577nm Receiving: 1270nm XG-PON: Forwarding: 1577nm Receiving: 1270nm GPON: Forwarding: 1490nm Receiving: 1310nm
	Connector Type	SC/UPC
	Fiber type	9/125μm SMF (Single Mode Fiber)
	Light Transmission Power	XG(S)-PON&GPON COMBO 5~8dBm (9.953G) 3~7dBm (2.488G)
	Receiving Sensitivity	XG(S)-PON&GPON COMBO ≥ -29dBm (9.953G) ≥ -30.5dBm (2.488G) ≥ -30dBm (1.244G)
	Saturation Power	XG(S)-PON&GPON COMBO ≤ -8dBm (9.953G) ≤ -10dBm (2.488G) ≤ -12dBm (1.244G)
Network Management Method		Support CLI, SNMP, TELNET, SSH, WEB
Business Capabilities		Support device log, device upgrade, device management, condition monitoring, configuration management, and user management. Layer 2 switching configuration management: Like port management, VLAN, RSTP, IGMP, ACL, QoS and so on.

	PON function configuration management: Like OLT authentication, DBA template, service template, line template and so on. Layer 3 function: support static routing, dhcp-relay and vlanif configuration.
Backplane Bandwidth	760G

Power supply	
AC	100V ~ 240V, 47 ~ 63Hz
DC	-40V ~ -72V
BBU (Backup Battery Unit)	DC: 11V~14V. Function: When the regular power supply is cut off, it can be switched to the backup power supply, and when the regular power supply resumes, it will switch back to the regular power supply and charge the backup power supply.
Maximum Power	≤ 150W

Environment	
Working Temperature	-15 ~ 50℃
Storage Temperature	-40 ~ 85℃
Ambient Humidity	5 ~ 90% (Non-condensing)

Order Information

Hardware			
No.	Model	Specifications	Accessory
1	FD1816S-B1	16* Combo PON + 2* 40G(QSFP+) / 100G(QSFP28) ports + 2*1G(SFP) / 10G(SFP+) ports (By default, the software supports GPON mode only)	(1) 2* Plugable AC / DC power module (Optional) (2) 1* BBU (Optional) (3) 1G(SFP) / 10G(SFP+) / 40G(QSFP+) / 100G(QSFP28) module (Optional) (4) Combo PON module (Optional)

Software			
No.	Lisence Control	Lisence Quantity	Description
1	Upgrade GPON to XG(S)-PON authorization	1	Upgrade 8 PON ports to XG(S)-PON (Each license controls 8 PON ports)
2	Upgrade GPON to XG(S)-PON authorization	2	Upgrade 16 PON ports to XG(S)-PON (Each license controls 8 PON ports)

Copyright © Shenzhen C-Data Technology Co., Ltd. 2025. All rights reserved.

Without the prior written consent of C-DATA, any reproduction, excerpting, backup, modification, translation or any other form of commercial use of this document or any portion of this document, and in any form or by any means, to transmit the document are prohibited.